



Portfolio Summary Information

General

Portfolio Name	Portfolio reporting test
Portfolio Manager	Malcolm K West
Description	Set of projects to work with reporting capability and benefits delivered to customers
Commentary	Going pretty well although will need to keep an eye on resourcing issues
Status	On Track



Project Overviews

	Overall Status	Name of Project	Dashboard								Current Phase	Estimated End date	Summary Information		
			Ownership	Schedule	Resources	Risk	Budget	Scope	Tech	Customer			Sponsor	Project Manager	
Corporate	<div><div></div></div>	Office move	<div><div></div></div>	<div><div></div></div>	<div><div></div></div>	<div><div></div></div>	<div><div></div></div>	<div><div></div></div>	<div><div></div></div>	<div><div></div></div>	prototype	12/1/12	Facilities	Malc	Juliet
		Project Commentary This is a comment about the overall health of the project											Project Description: Moving to the new offices on High Street		
Operational	<div><div></div></div>	Product Launch	<div><div></div></div>	<div><div></div></div>	<div><div></div></div>	<div><div></div></div>	<div><div></div></div>	<div><div></div></div>	<div><div></div></div>	<div><div></div></div>	prototype	12/1/12	Branch ZZZ	Matium	malc
		Project Commentary This is a comment about the overall health of the project											Project Description: Launching a new range of reporting templates for our corporate customers._x000D_ Looking to get as wide coverage as possible.		
Operational	<div><div></div></div>	reporting 1	<div><div></div></div>	<div><div></div></div>	<div><div></div></div>	<div><div></div></div>	<div><div></div></div>	<div><div></div></div>	<div><div></div></div>	<div><div></div></div>	prototype	12/1/12	Marketing	Wendy Simmonds	Malcolm West
		Project Commentary Going well but need to think of another report type that fits well amongst the full default and simple poster styles. Perhaps something poster styled but using custom data....something like Analyst report. Will be discussing this with a few reference site customers to see what they would like.											Project Description: providing new XSL report templates for general use. Quick and easy to do and helps people unserstand what is possible.		
Strategic	<div><div></div></div>	reporting 2	<div><div></div></div>	<div><div></div></div>	<div><div></div></div>	<div><div></div></div>	<div><div></div></div>	<div><div></div></div>	<div><div></div></div>	<div><div></div></div>	prototype	12/1/12	Technical Services	Malcolm west	Paul Simms
		Project Commentary This is looking very good and it was relatively easy to get the data to load from properties to a spreadsheet. If we can close the loop by getting properties populated from spreadsheets this would be even easier. With a few tweaks this could give a lot.											Project Description: This project is investigating loading of data from spreadsheets into portfolio reports		
Strategic	<div><div></div></div>	reporting 3	<div><div></div></div>	<div><div></div></div>	<div><div></div></div>	<div><div></div></div>	<div><div></div></div>	<div><div></div></div>	<div><div></div></div>	<div><div></div></div>	prototype	12/1/12	Local Authority customer	Neil Hurford	Guy Holford
		Project Commentary This is a comment about the overall health of the project											Project Description: this is a test of exciting new reporting opportunities. We could be using this to do much more with Portfolio reporting.		

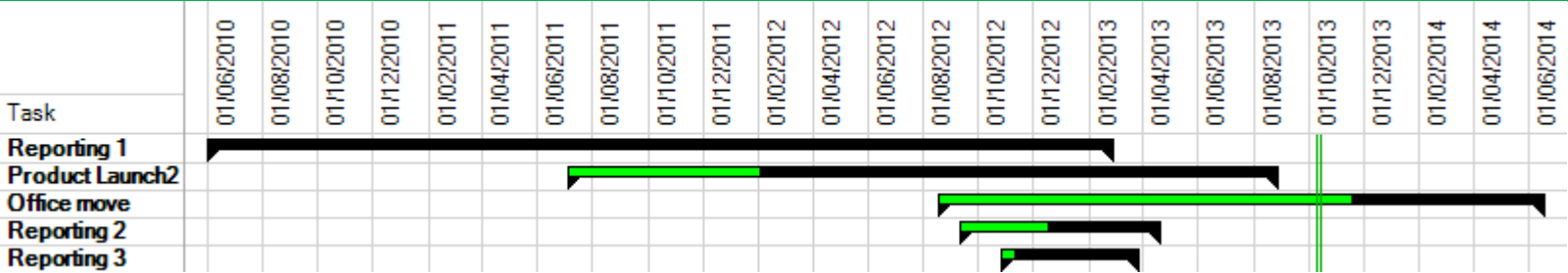


Finances

Indicator	Budget	Projected Completion	Current
Health Rating	[good, 2] [okay, 3]	[good, 3] [okay, 2]	[good, 2] [okay, 3]
Income	160,150.00	160,150.00	30,150.00
Costs	78,100.00	80,125.00	31,525.00
Contingency	16,050.00	24.00	24.00
Margin	66,000.00	80,001.00	-1,399.00
Percent Margin	41.2%	50.0%	-4.6%
Cash Position			-1,500.00
Level Of Debtors			0.00



Planning



Project	Start <	Finish	Duration	% Complete	Cumulative Total Cost
reporting 1	01/06/2010	01/03/2013	1d	0	0.00
Product Launch	05/07/2011	30/08/2013	564d	27	0.00
Office move	17/08/2012	20/06/2014	481d	68	75,418.00
reporting 2	10/09/2012	22/04/2013	1d	44	0.00
reporting 3	25/10/2012	27/03/2013	110d	10	0.00



Risks

	Opera...	Comm...	Other	People	Legisl...	Techn...	Techn...	Total
Open	8	6	0	0	1	0	2	17
Action Pending	1	3	1	0	1	1	0	7
Dont know	1	0	0	1	0	0	0	2
Closed	1	4	0	0	0	1	0	6
Parked	0	1	0	0	0	0	0	1
	11	14	1	1	2	2	2	33

Project Name	Risk ID	Cause	Status	Owner	Residual Risk Rating >	Residual Expected Value
reporting 3	57	Resource availability	Open	Person 1	8.4	10000
Product Launch	29	Copy of	Action Pending	Malcolm K West	4.05	50000
Product Launch	18	Copy of	Open		4	900
Product Launch	41	something else	Action Pending	Steve	3.9	12500
Product Launch	42	The natives are revolting	Dont know		3.75	0
Product Launch	26	Copy of	Action Pending	Malcolm K West	3.3	2000
reporting 3	58	Access to customer contacts when we need them	Open	juliet	3.3	500
Product Launch	19	Copy of	Closed		3.15	10000
reporting 2	44	unavailability of moving companies during our desired week	Open	Malcolm K West	3	5000
Product Launch	12	b	Open		3	1000
Product Launch	36	operations	Closed	Malcolm K West	2.7	0
Product Launch	32	Copy of	Dont know	Malcolm K West	2.7	600
reporting 2	55	Copy of	Action Pending	Tony	2.4	5000
Product Launch	20	blah	Closed	Malcolm K West	2.4	500
reporting 2	50	Over run on moving time, means further disruption to working and extensions from Moving Company	Parked	Tony	2.4	5000
Office move	7	Over run on moving time, means further disruption to working and extensions from Moving Company	Action Pending	Tony	2.4	5000
reporting 3	59	Competitor launches something similar	Open	Malcolm K West	2.25	50000
Office move	1	unavailability of moving companies during our desired week	Open	Malcolm K West	2.25	5000
reporting 2	52	lkewjglsJGP	Open	Malcolm K West	2.1	10000
Office move	9	lkewjglsJGP	Open	Malcolm K West	2.1	10000
reporting 2	48	Possible damage to IT equipment leading to in ability to work after the move	Open	sue	2	0
Product Launch	34	Copy of	Open	Malcolm K West	1.8	6000
Product Launch	31	Copy of	Open	Malcolm K West	1.8	6000
Product Launch	25	sommat	Open	Malcolm K West	1.8	20000
Product Launch	28	this	Open	Malcolm K West	1.8	6000
Product Launch	30	Copy of	Open	Malcolm K West	1.8	6000
Product Launch	35	Copy of	Open	Malcolm K West	1.8	6000
Product Launch	13	Copy of	Open		1.5	1000
Product Launch	11	a	Closed		1.5	1000
Product Launch	14	Copy of	Closed		1.5	1000
Product Launch	16	Copy of	Closed		1.5	1000
Product Launch	22	Copy of	Action Pending	Malcolm K West	1.5	50000
Office move	6	Damage to buildings during the moving of bulky items resulting in repair costs	Action Pending	sue	1.5	5000



Issues

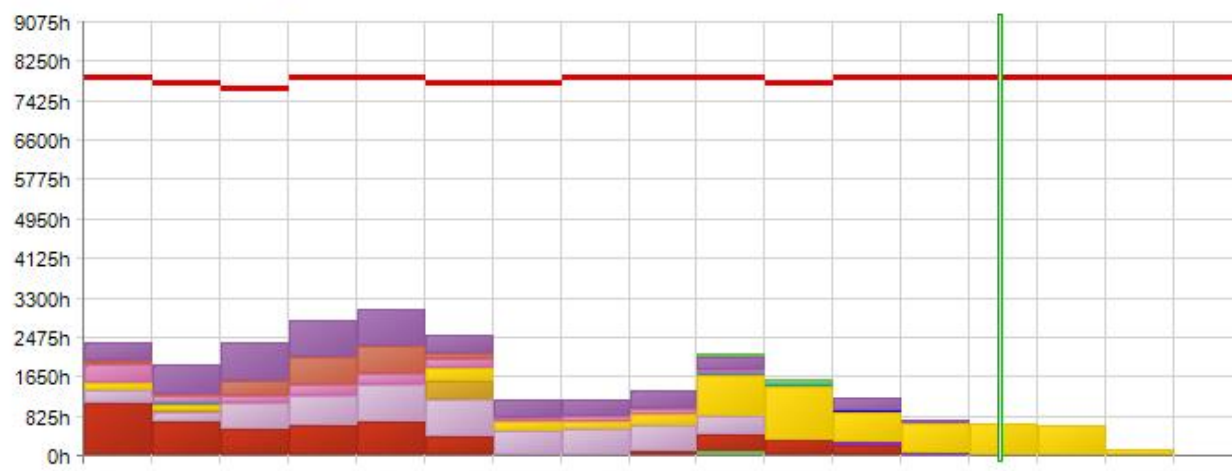
	P	RFC	OS	Total
Open	2	6	2	10
Closed	0	2	1	3
Action Pending	2	6	2	10
	4	14	5	23

Project Name	ID	Type	Status	Desc	Owner	Priority	Severity >
Office move	1	P	Open	this is for reports	Malcolm K West	Urgent	10
Product Launch	5	RFC	Open	b		Medium	10
Product Launch	24	RFC	Open	Copy of b		Medium	10
Office move	2	RFC	Open	Complexity of IT kit move.....can it be duplicated	sue	High	7
Product Launch	10	OS	Closed	g		Medium	6
Product Launch	21	RFC	Closed	Copy of a		Medium	5
Product Launch	15	RFC	Open	k		Medium	5
Product Launch	4	RFC	Closed	a		Medium	5
Product Launch	13	P	Action Pending			High	4
reporting 3	37	RFC	Open	Enter your issues here	Person 1	Medium	4
Product Launch	7	OS	Action Pending	d		Low	4
Product Launch	17	RFC	Action Pending	l		High	3
Product Launch	12	P	Open	i		Medium	3
Product Launch	20	P	Action Pending	o		Low	3
Product Launch	16	RFC	Action Pending			Low	3
Product Launch	8	RFC	Action Pending	e		High	2
Product Launch	25	OS	Open	Copy of c		High	2
Product Launch	6	OS	Open	c		High	2
Office move	3	RFC	Open	Could reception and meeting rooms be moved first? lower risk, best to do them first	sue	Medium	2
Product Launch	18	OS	Action Pending	m		Medium	2
reporting 2	29	RFC	Action Pending	Could reception and meeting rooms be moved first? lower risk, best to do them first	sue	Low	2
reporting 2	35	RFC	Action Pending	Could reception and meeting rooms be moved first? lower risk, best to do them first	sue	Low	2
reporting 2	33	RFC	Action Pending	Could reception and meeting rooms be moved first? lower risk, best to do them first	sue	Low	2



Resources

[John Smith] [Liz] [Moving Company] [Vinciane] Admin Dave
*John juliet karl Malcolm KWest paulh PaulSupport
sid sue Tony



Project	6/10-11/10	12/10-5/11	6/11-11/11	12/11-5/12	6/12-11/12	12/12-5/13	6/13-11/13	12/13-8/14	6/14
[John Smith]									
reporting 1	6h								
Total	6h								
[Liz]									
reporting 2					72h	132h			
Total					72h	132h			
[Moving Company]									
reporting 2					4h				
Total					4h				
[Vinciane]									
Product Launch							8h		
Total							8h		
Admin									
reporting 1	376h	614h	792h	792h	792h	402h	364h	370h	370h
Product Launch							264h	64h	
Office move							8h		
Total	376h	614h	792h	792h	792h	402h	364h	370h	370h
Dave									
reporting 1	88h	32h	320h	550h	581h	94h			
Total	88h	32h	320h	550h	581h	94h			
*John									
reporting 1	371h	177h	155h	231h	211h	195h	104h	106h	106h
Total	371h	177h	155h	231h	211h	195h	104h	106h	106h
juliet									
reporting 1	40h								
reporting 3						20h	20h		
Total	40h					20h	20h		
karl									
Office move							48h		
Total							48h		
Malcolm KWest									
reporting 1	164h	97h	8h		290h	156h	158h	158h	122h
Office move							88h	240h	260h
reporting 3								233h	532h
reporting 2								664h	632h
Product Launch								124h	
Total	164h	97h	8h		290h	156h	158h	246h	844h
paulh									
Office move								64h	24h
Total								64h	24h
PaulSupport									
reporting 1	40h			400h					
Total	40h			400h					
sid									
reporting 1	260h	202h	528h	636h	792h	748h	520h	528h	528h
Total	260h	202h	528h	636h	792h	748h	520h	528h	528h
sue									
reporting 1	1088h	696h	541h	617h	686h	393h			
Office move							88h	138h	130h
reporting 2								127h	
Total	1088h	696h	541h	617h	686h	393h	88h	328h	293h
Tony									
reporting 2							84h	12h	4h
Office move							8h	12h	
Total							92h	12h	16h
Summary	2347h	1904h	2344h	2826h	3062h	2522h	1144h	1162h	1338h