



SMALL TEAM EDITION

Providing your team with the tools needed for effective and consistent project and programme delivery. Providing a team of 20 with both methodology and infrastructure and an excellent reporting capability all for just £999.



PROJECT in a box

"Your own Project Support Office"

Small Team Edition provides the same Enterprise level solution capabilities but right sized for the smaller team or department level.

Central to the way Small Team Edition works is the Method Template structure providing you with prepackaged methods to support tasks through to large projects and if you want you can easily add the official Managing Successful Programmes® and PRINCE2® method templates to these. This approach means you can immediately create a project structure with the key templates and guidance in place as well as the reporting infrastructure all set up and ready to go. Of course you can personalise them if you want to and we provide the tools you need to help you do this.

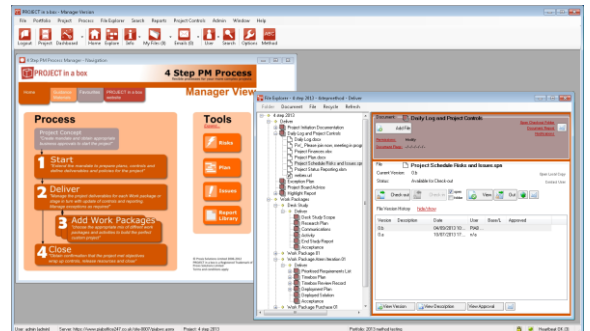
Project Controls are collected using Planner and excel so anyone you want to can contribute data to the system building the valuable information which enables you to drive the powerful Dashboards, reporting and the very helpful notifications. Just hold an email address for each user and they will get notification emails about tasks, risks and issues of interest to them based on the rules you specify. Resource profiles are available by project, by user, or collection of users, to identify spare capacity or over commitments. Of course if you prefer MS Project you can load data from this or from a mix of different supported file types if you prefer.



Small Team Edition provides twenty users consisting of two manager/administrators, six active team members and a further twelve view only users all for just £999. These users have access to the same range of capabilities as with Enterprise Edition:
Manager/Admin can – Own the methods, create portfolios, projects and users; manage and use reporting, dashboards and analysis, as well as use the Team and View Only user capabilities.
Team users can – work with project documents, updating plans, tasks, risks and issues, adding additional documentation, preparing reporting content as well as use the capabilities of a view only user.
View only users can – see latest portfolio and project content they have permissions for including reports, tasks, risks and issues.

All users can use the Browser App from smart phones and tablets and the Team and Manager users can get greater functionality through the Windows PC App.

Small Team Edition is a solution in its own right and also a starting point for something bigger depending on your user numbers and ambitions. If you reach your user capacity you can add extra users at any time giving you the flexibility you need. You can also host it yourself or we can host it for you if you want to be up and running immediately.



Dashboards, Project, Programme and Portfolio reporting and powerful Browser interfaces that will run on tablets or smartphones are the icing on the cake. Often not the primary focus for the team just trying to get some control of the day to day turmoil of their project documentation and assurance but these prove to be very popular features to begin to actively manage projects as you hoped once the fire fighting has been brought under control.

Your Small Team Edition purchase also includes a year of support and upgrades to help you get up and running and several hours of on-line training so there is a helping hand while you take those first steps towards your PPM objectives.



The PROJECT in a box logo™ is a Trade Mark of Prosis Solutions Limited, PROJECT in a box™ is a Registered Trade Mark of Prosis Solutions Limited, Atern is a Registered Trade mark of the DSDM Consortium, PRINCE® is a registered trade mark of AXELOS Limited, PRINCE2® is a registered trade mark of AXELOS Limited, MSP® is a registered trade mark of AXELOS Limited, The Swirl logo™ is a trade mark AXELOS Limited



SMALL TEAM EDITION

Providing your team with the tools needed for effective and consistent project and programme delivery. Providing a team of 20 with both methodology and infrastructure and an excellent reporting capability all for just £999.



PROJECT in a box

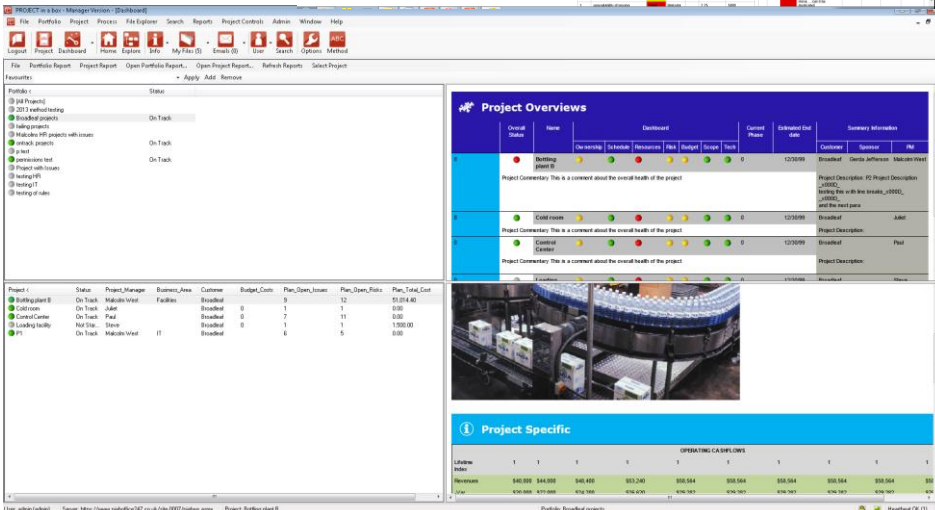
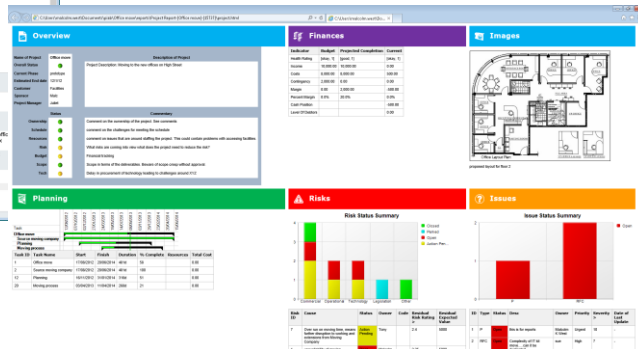
"Your own Project Support Office"

Licensing options

Small Team Edition is just £999+vat for your twenty active users. If required an additional fifteen active users can be added at the standard price per user before upgrading to Enterprise Edition is required to add further users.

Any number of users can be listed in the system and allocated to projects to facilitate email communications and tracking and you can then allocate your purchased licences between them and move these around at any time you wish.

MSP® Method template is an additional £500 and the PRINCE2® Method Template a further £100 and the standard training package can be extended as well making Small Team Edition a great starting point for your PPM development.



Functionality in brief

Methodology

- Process map point & click navigation
- Functionality from point & click process
- PRINCE2® resource pack
- 1, 3, 4 and 5 Step Generic PM methods
- DSDM Atern® Agile method
- PMO best practice method
- Lessons Learned & Proposal methods
- Customise the standards or create your own methods

System

- Vary the access and experience by user
- On-line or on-Premise models available
- Unlimited number of projects
- Unlimited number of users
- User access controlled by licence model
- Windows App for desktop PC use
- Web app for tablet and smartphone use
- Supports integration with SharePoint
- Planning integration with MS Project, Planner, Primavera and more
- Integration with Outlook and other email

Management

- Process based document management
- Approval process workflow
- Task management and analysis
- Risk management and analysis
- Issue management and analysis
- Resource management and analysis
- Finance management and analysis
- Assurance and audit tools
- Notifications and reminders
- Collaboration and communication tools
- Portfolio and programme tools

Reporting

- Standard Management reports
- Customise own management reports
- Assurance reports
- Standard dashboards
- Customisable dashboards
- Publish and share reports
- Portfolio, Programme and department reporting all supported
- Include your own images and custom spreadsheet content as required

Admin

- Sophisticated permissions management
- Ability to delegate parts of Admin role
- Export whole projects to archive DVD
- Administration reports
- User activity logging and analysis
- Rules based portfolio management
- New project wizard, 10 second launch

Free on-line consultation or try before you buy with our evaluation offer... Visit our website for more info



The PROJECT in a box logo™ is a Trade Mark of Prosis Solutions Limited, PROJECT in a box™ is a Registered Trade Mark of Prosis Solutions Limited, Atern is a Registered Trade mark of the DSDM Consortium, PRINCE2® is a registered trade mark of AXELOS Limited, PRINCE2® is a registered trade mark of AXELOS Limited, MSP® is a registered trade mark of AXELOS Limited, The Swirl logo™ is a trade mark AXELOS Limited

Tel +44(0)1993 810425
Email enquiries@projectinabox.org.uk
Web www.projectinabox.org.uk
Skype projectinabox