

Praxis Framework™

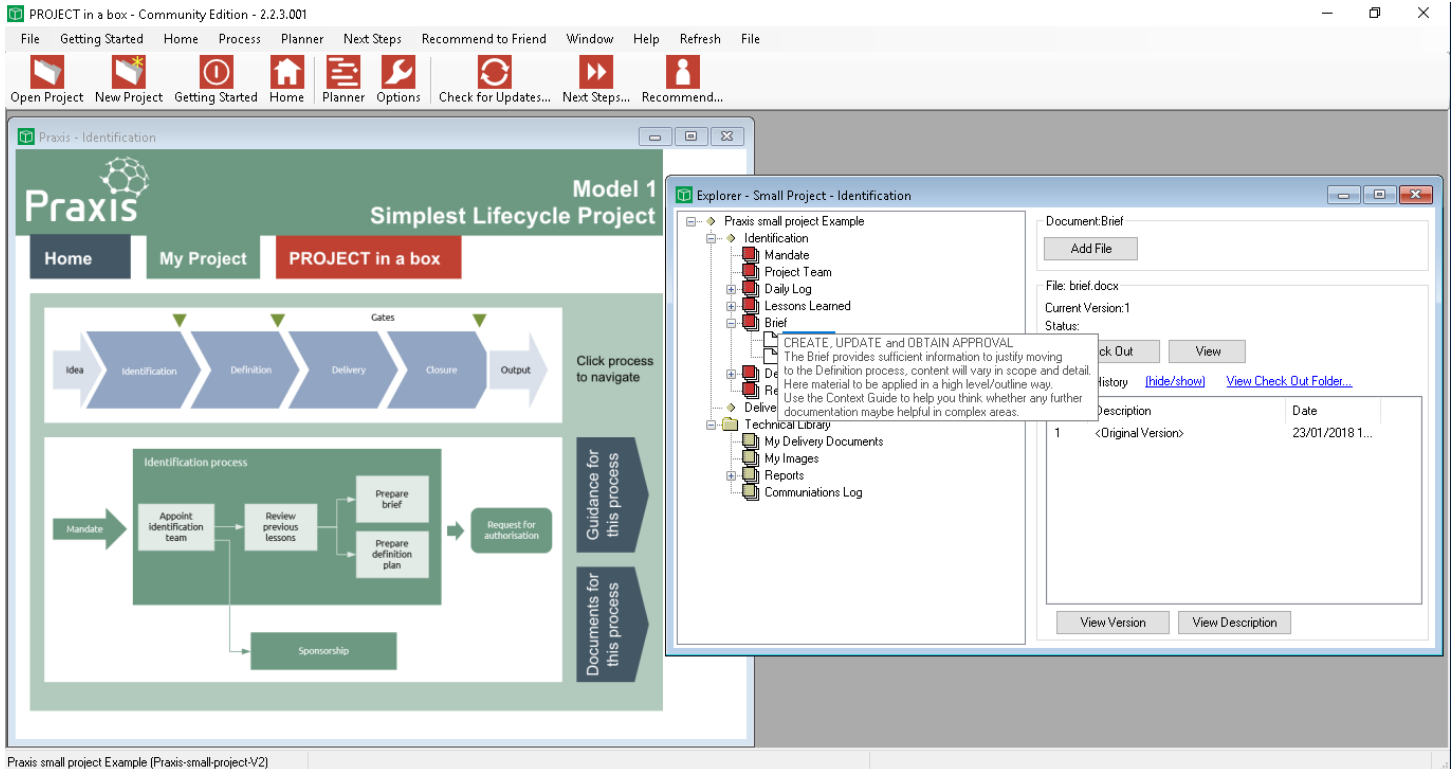
Helping you deliver with confidence



PROJECT in a box provides software to help you deliver your PPM needs with a methodology led approach. Our tools allow you to support a range of methodologies and Praxis is key amongst them.

method to users who may be otherwise unfamiliar with it.

This approach also ensures that you have consistency in the way Praxis is implemented, with the same steps and resources used on each project.



Simply create a new Praxis project and the tool will set up a full set of the resources you need to deliver, including:

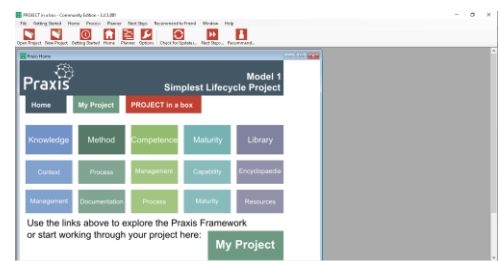
- Templates
- Placeholders for content to collect
- Guidance hints and tips

All of this is structured into processes so the tool shows you what you need at each point in the process. Users navigate the material by point and click on the interactive navigation diagrams.

Of course, users can version control the templates using the inbuilt document management system and also collect and store their other project documentation, all within the same structure.

This decoding of the framework into a format that users can easily follow makes it a great way to introduce the

One of the things we really like about Praxis is the rich supporting resources available on the website. Even though you are delivering your project with PROJECT in a box you can still access this all using the links built into the tool.



All of this is available totally free to use forever with the Community Edition platform. But don't worry this isn't a dead end, you can do all of the above plus more in our commercial tools across your organisation. More details on the reverse side.



Frequently asked Questions

Can I use this for free?

Yes Praxis within our Community Edition and Planner tools is completely free anyone can download and use it from any organisation.

Is this a trial?

No this is not a trial you can use these personal tools for as long as you want on as many projects as you want.

Are any other methods supported?

Yes Community Edition supports a range of methods, many for free and others which you have to pay for.

Can I customise Praxis?

Not in Community Edition but yes you can in all the commercial PROJECT in a box versions.

What is the Planner tool?

Planner is a free tool for managing plans/tasks, risks, issues, changes and costs on your project. It is included automatically with all PROJECT in a box versions and is the tool you use for opening the templates related to those areas, although you can also use MS Project or excel if you prefer.

What if I want to share access to my projects?

You cannot do that with the free Community Edition platform but can upgrade to on-premises and cloud solutions from PROJECT in a box for multi-user working. You will be able to move any existing projects with you.

Can I do reporting on my projects?

The Planner tool provides some in built simple reporting against your core controls for more sophisticated reporting upgrade to a commercial PROJECT in a box version.

What do the people at Praxis Framework think of this?

Adrian Dooley, Lead Author of the Praxis Framework said "This is a great way to support your implementation of the framework, we like it a lot"

What if I have further questions?

You can contact us with questions or arrange a demo of PROJECT in a box versions including the Praxis framework via:
Email: enquiries@projectinabox.org.uk
Phone: +44(0)1993 810425

Sounds good? Try these next steps

Watch the video live on you tube now or later with this QR code or link
<https://youtu.be/AStru-yGv1Q>



Sign up to download and use for free now or later with this QR code or link
<http://www.projectinabox.org.uk/registration/>

